

## 546 S Randall Road Suite F St. Charles , IL

### AVAILABLE SPACE:

- **2,310 SF**  
End Cap Space

\$17.00/SQ.FT.

**4 MONTHS FREE RENT!!!**

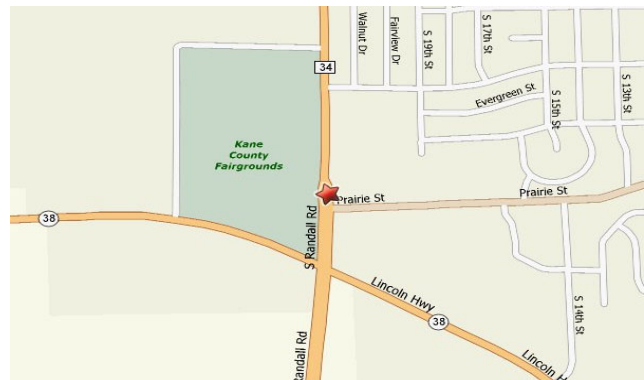


### PROPERTY HIGHLIGHTS:

- Join Syrup, Global Brew, & CD One Price Cleaners!!!
- Great Visibility
- Insert available off Randall Road Monument Sign
- 325 Parking Spaces throughout center
- Frontage off Randall Road
- High Traffic Corner

### LOCATION:

- North East Corner, Randall Road & Prairie Street
- North of Roosevelt Road (Rt. 38)
- South of North Ave.
- Next to Kane County Court House
- Across from Kane County Fairgrounds



### DEMOGRAPHICS:

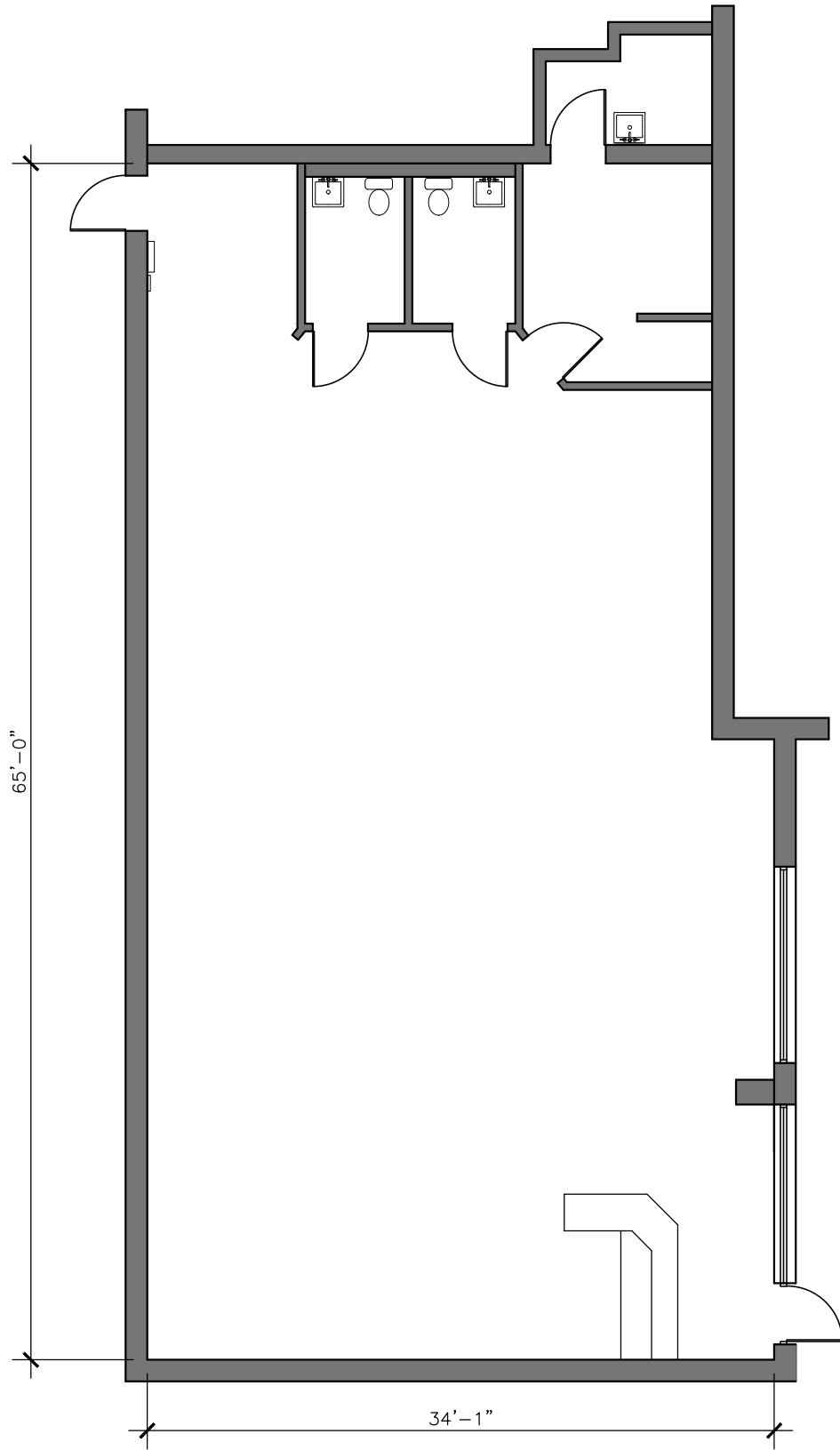
Radius:	<u>1 Mile</u>	<u>3 Mile</u>	<u>5 Mile</u>
Population:	11,564	50,689	104,209
Avg. Income:	\$121,274	\$134,641	\$141,574

### Traffic Count

- 39,100 vehicles per day

**CIMA DEVELOPERS, LP.**  
30 W 180 Butterfield Rd., Warrenville, IL 60555  
O: 630.653.1700 F: 630.791.8283

**Dan Soltis**  
dsoltis@CIMADevelopers.org  
www.CIMADevelopers.org



**UNIT 546F**

