



# FOR LEASE

NEC Euclid Ave & Rohlwing Rd | Arlington Heights, IL

## AVAILABLE SPACE

- **6,000 SF Building**  
w/ Outdoor Seating
- **6,000 SF Building**  
w/ Outdoor Seating
- **4,000 SF Building**  
w/ Drive Thru

## PROPERTY HIGHLIGHTS

- **NEW Commercial Development**  
in Arlington Heights, IL
- Within the same block of the  
**New Home for The CHICAGO BEARS**
- Plaza will consist of
  - **Two (2) Free Standing Restaurants**
  - **Drive Thru Restaurant**
  - **The PRIDE of Arlington Heights Station & Convenience Store**
  - **93 Octane Brewery & Tap Room**
  - **Hotel, Office Use, and Residential**

## LOCATION

- Directly East of Interstate 53 off Euclid Ave Exit
- North East Corner of Euclid Ave & Rohlwing Rd with Full Access off Euclid Ave

## DEMOGRAPHICS

Radius	1 mile	3 mile	5 mile
Pop.	8,921	105,797	265,549
Avg. Inc.	\$119,680	\$126,884	\$118,137

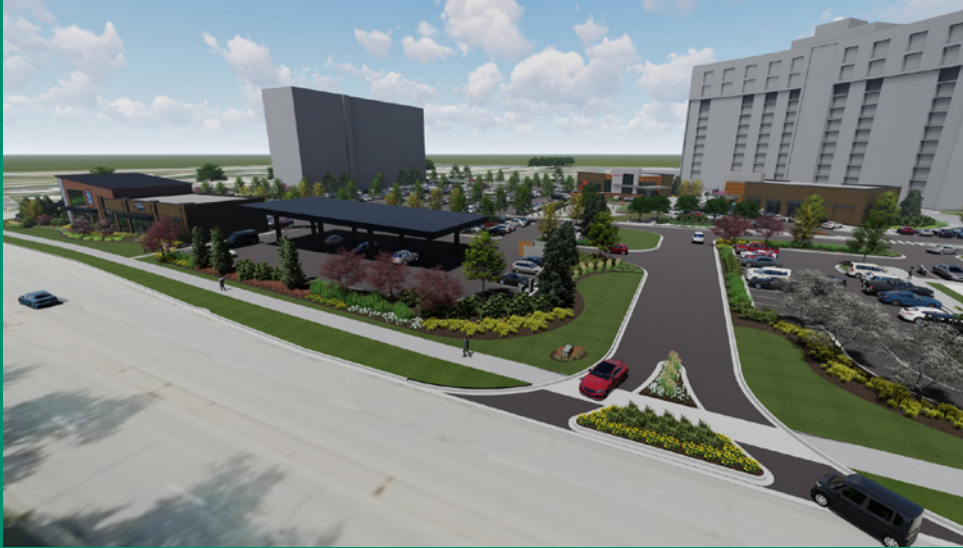






# FOR LEASE

NEC Euclid Ave & Rohlwing Rd | Arlington Heights, IL





# FOR LEASE

NEC Euclid Ave & Rohlwing Rd | Arlington Heights, IL

